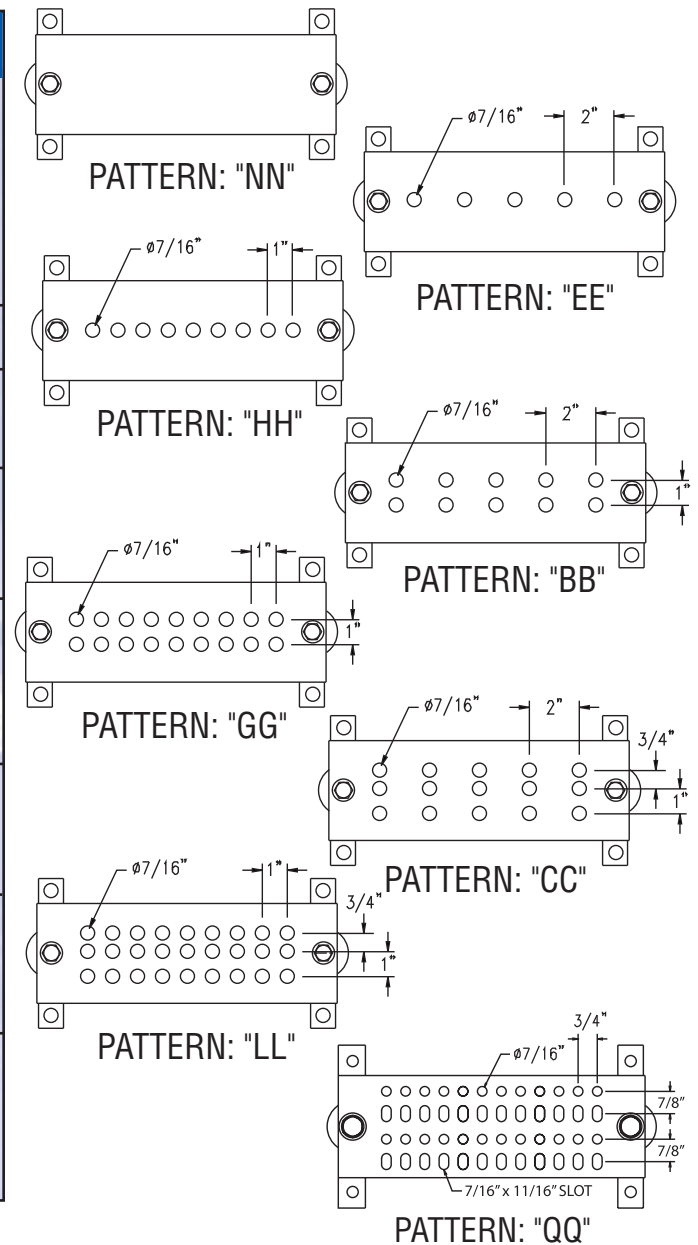


BOLT PATTERN	NO. & SIZE OF HOLES*	GROUNDING BUS BAR DESCRIPTION	LENGTH	PART #	MAX ORDER QTY
ERICO "NN"	0	2" x 1/4" Cu	12"	EGBA14212NN	6
	0	2" x 1/4" Cu	24"	EGBA14224NN	6
	0	4" x 1/4" Cu	12"	EGBA14412NN	6
	0	4" x 1/4" Cu	20"	EGBA14420NN	6
	0	4" x 1/4" Cu	24"	EGBA14424NN	6
ERICO "EE"	5 ea. 7/16"	2" x 1/4" Cu	12"	EGBA14212EE	4
ERICO "HH"	9 ea. 7/16"	2" x 1/4" Cu	12"	EGBA14212HH	4
	21 ea. 7/16"	2" x 1/4" Cu	24"	EGBA14224HH	4
ERICO "BB"	5 pair 7/16"	2" x 1/4" Cu	12"	EGBA14212BB	4
	5 pair 7/16"	4" x 1/4" Cu	12"	EGBA14412BB	4
ERICO "GG"	21 pair 7/16"	2" x 1/4" Cu	24"	EGBA14224GG	4
	9 pair 7/16"	4" x 1/4" Cu	12"	EGBA14412GG	4
	21 pair 7/16"	4" x 1/4" Cu	24"	EGBA14424GG	4
ERICO "CC"	5 sets of 3 - 7/16"	4" x 1/4" Cu	12"	EGBA14412CC	4
NEMA STD	9 sets of 3 - 7/16"	4" x 1/4" Cu	20"	EGBA14420CC	4
NEMA STD	11 sets of 3 - 7/16"	4" x 1/4" Cu	24"	EGBA14424CC	4
ERICO "LL"	9 set of 3 - 7/16"	4" x 1/4" Cu	12"	EGBA14412LL	4
NEMA STD	17 set of 3 - 7/16"	4" x 1/4" Cu	20"	EGBA14420LL	4
NEMA STD	21 set of 3 - 7/16"	4" x 1/4" Cu	24"	EGBA14424LL	4
ERICO "QQ"	23 sets of 4 holes 7/16" and slotted	4" x 1/4" Cu	20"	EGBA14420QQ	4
NEMA STD	28 sets of 4 holes 7/16" and slotted	4" x 1/4" Cu	24"	EGBA14424QQ	4

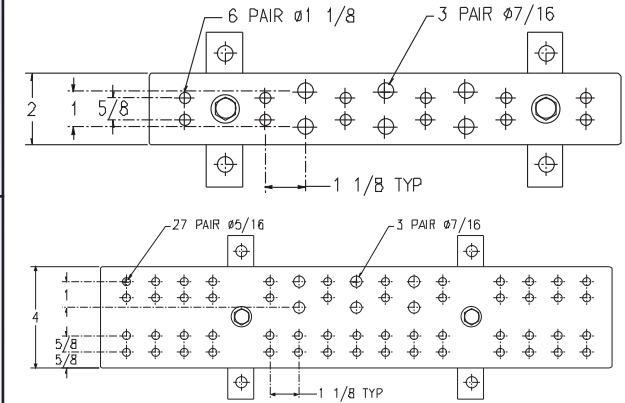


*Does not include mounting holes
All bars have stainless steel brackets, mounting bolts and insulators



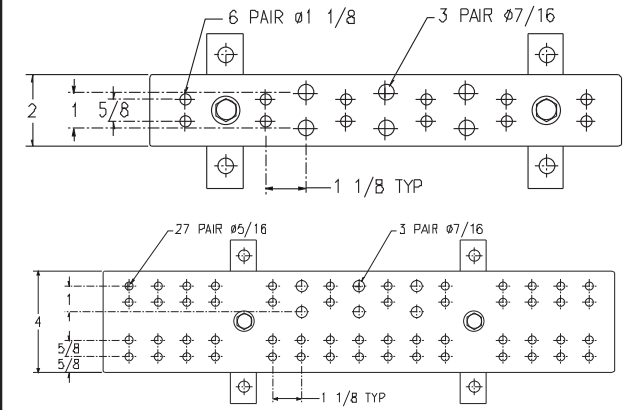
Tinned Plated Telecom System Grounding Bus Bars

BOLT PATTERN	NO. & SIZE OF HOLES*	GROUNDING BUS BAR DESCRIPTION	LENGTH	PART #	MAX ORDER QTY
TGB	6 pair - 5/16" 3 pair - 7/16"	2" x 1/4" Tinned Cu	12"	TGBA14L06PT	4
EIA/TIA	8 pair - 5/16" 3 pair - 7/16"	2" x 1/4" Tinned Cu	15-1/2"	TGBA16L08PT	4
Standard	10 pair - 5/16" 3 pair - 7/16"	2" x 1/4" Tinned Cu	17-3/4"	TGBA18L10PT	4
	12 pair - 5/16" 3 pair - 7/16"	2" x 1/4" Tinned Cu	20"	TGBA20L12PT	4
	14 pair - 5/16" 5 pair - 7/16"	2" x 1/4" Tinned Cu	24"	TGBA25L14PT	4
	18 pair - 5/16" 5 pair - 7/16"	2" x 1/4" Tinned Cu	29"	TGBA29L18PT	4
TMGB	15 pair - 5/16" 3 pair - 7/16"	4" x 1/4" Tinned Cu	12"	TMGBA14L15PT	4
EIA/TIA	19 pair - 5/16" 3 pair - 7/16"	4" x 1/4" Tinned Cu	15-1/2"	TMGBA16L19PT	4
Standard	23 pair - 5/16" 3 pair - 7/16"	4" x 1/4" Tinned Cu	17-3/4"	TMGBA18L23PT	4
	27 pair - 5/16" 3 pair - 7/16"	4" x 1/4" Tinned Cu	20"	TMGBA20L27PT	4
	33 pair - 5/16" 5 pair - 7/16"	4" x 1/4" Tinned Cu	24"	TMGBA25L33PT	4
	41 pair - 5/16" 5 pair - 7/16"	4" x 1/4" Tinned Cu	29"	TMGBA29L41PT	4



Untinned Plated Telecom System Grounding Bus Bars

BOLT PATTERN	NO. & SIZE OF HOLES*	GROUNDING BUS BAR DESCRIPTION	LENGTH	PART #	MAX ORDER QTY
TGB	6 pair - 5/16" 3 pair - 7/16"	2" x 1/4" Cu	12"	TGBA14L06P	2
EIA/TIA	8 pair - 5/16" 3 pair - 7/16"	2" x 1/4" Cu	15-1/2"	TGBA16L08P	2
Standard	10 pair - 5/16" 3 pair - 7/16"	2" x 1/4" Cu	17-3/4"	TGBA18L10P	2
	12 pair - 5/16" 3 pair - 7/16"	2" x 1/4" Cu	20"	TGBA20L12P	2
	14 pair - 5/16" 5 pair - 7/16"	2" x 1/4" Cu	24"	TGBA25L14P	2
	18 pair - 5/16" 5 pair - 7/16"	2" x 1/4" Cu	29"	TGBA29L18P	2
TMGB	15 pair - 5/16" 3 pair - 7/16"	4" x 1/4" Cu	12"	TMGBA14L15P	2
EIA/TIA	19 pair - 5/16" 3 pair - 7/16"	4" x 1/4" Cu	15-1/2"	TMGBA16L19P	2
Standard	23 pair - 5/16" 3 pair - 7/16"	4" x 1/4" Cu	17-3/4"	TMGBA18L23P	2
	27 pair - 5/16" 3 pair - 7/16"	4" x 1/4" Cu	20"	TMGBA20L27P	2
	33 pair - 5/16" 3 pair - 7/16"	4" x 1/4" Cu	24"	TMGBA25L33P	2
	41 pair - 5/16" 3 pair - 7/16"	4" x 1/4" Cu	29"	TMGBA29L41P	2



CADWELD® Molds to Attach Ground Pigtails

CABLE SIZE	BUS BAR THICKNESS	IN-STOCK MOLD PART #	WELD METAL
2 SOL	1/4"	LJCEG1T	65
4/0 STR	1/4"	LJCEG2Q	90

All molds require L160 handle clamp



Phone: 800-677-9089
 Fax: 800-677-8131
www.erico.com

WARNING
 ERICO products shall be installed and used only as indicated in ERICO's product instruction sheets and training materials. Instruction sheets are available at www.erico.com and from your ERICO customer service representative. Improper installation, misuse, misapplication or other failure to completely follow ERICO's instructions and warnings may cause product malfunction, property damage, serious bodily injury and death.

Copyright ©2007 ERICO International Corporation. All rights reserved.
 CADDY, CADWELD, CRITEC, ERICO, ERIFLEX, ERITECH, and LENTON are registered trademarks of ERICO International Corporation.

